

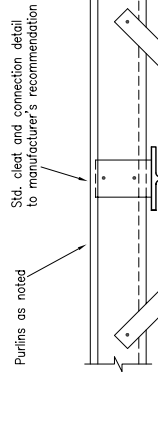
ROOF PLAN

SUSPENDED MEZZANINE FLOOR DETAILS

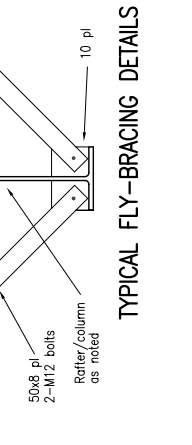
R1	125x12 EA
R2, R3, R4, R5, R6	360UB45
R5&R6	410UB60
R7	200UB25
R8&R9	150 PFC
WB	200 PFC & 100x75x10 UA
R2C-R6C	360UB45
R7C	200UB25
C1	100x6 SHS
C2	125x5 SHS
S1	139.7x3.5 CHS
S2	139.7x5.0 CHS
S3	139.7x5.4 CHS
T1	M20 Rod
T2	M24 Rod
T3	M30 Rod
AR1&AR6	200PFC
AR2-AR5	200UB22
AR1-AR6	60x4.5 CHS

MB1	300PFC
MB2	410UB45
MB3-MB5	300PFC
MB6	200UB18
MB7	250PFC
MB8	200PFC
MC	100x6 SHS
MT	75x5 SHS
SC	75x4 SHS

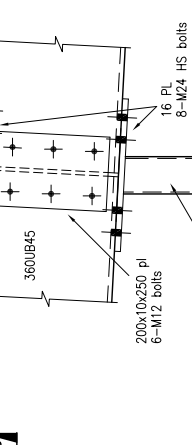
(SC - Stub columns at base of stairs)



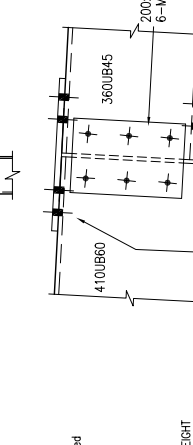
TYPICAL FLY-BRACING DETAILS



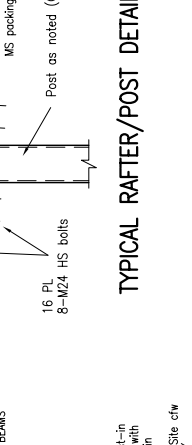
TYPICAL RAFTER/POST DETAILS



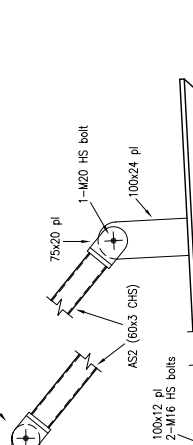
TYPICAL AWNING DETAIL



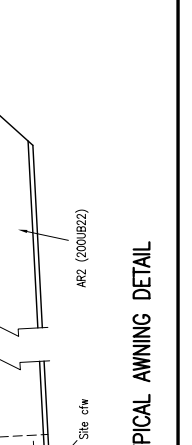
TYPICAL MEZZANINE FLOOR DETAILS



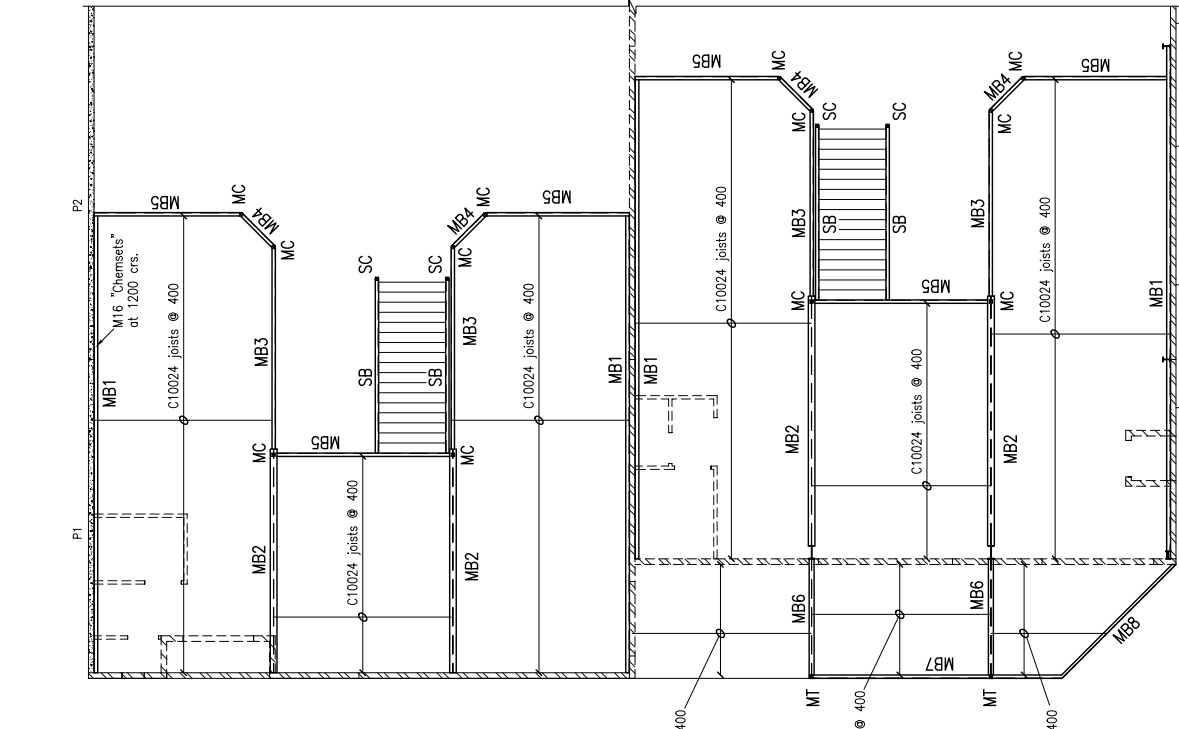
TYPICAL WB CONFIGURATION



TYPICAL WIND BRACING/PANEL CONNECTION DETAIL



END WALL RAKING ANGLE CONNECTION DETAIL

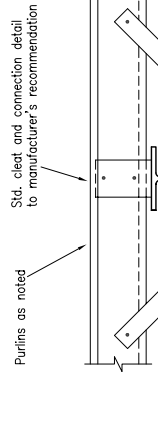


MEZZANINE PLAN

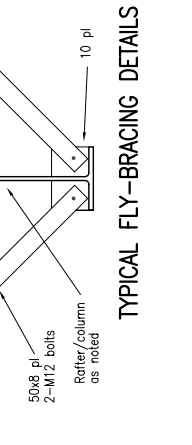
R1	125x12 EA
R2, R3, R4, R5, R6	360UB45
R5&R6	410UB60
R7	200UB25
R8&R9	150 PFC
WB	200 PFC & 100x75x10 UA
R2C-R6C	360UB45
R7C	200UB25
C1	100x6 SHS
C2	125x5 SHS
S1	139.7x3.5 CHS
S2	139.7x5.0 CHS
S3	139.7x5.4 CHS
T1	M20 Rod
T2	M24 Rod
T3	M30 Rod
AR1&AR6	200PFC
AR2-AR5	200UB22
AR1-AR6	60x4.5 CHS

MB1	300PFC
MB2	410UB45
MB3-MB5	300PFC
MB6	200UB18
MB7	250PFC
MB8	200PFC
MC	100x6 SHS
MT	75x5 SHS
SC	75x4 SHS

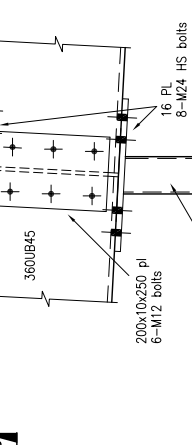
(SC - Stub columns at base of stairs)



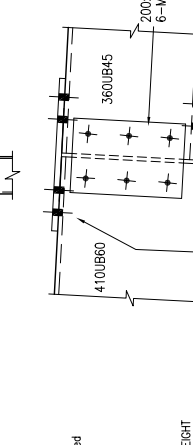
TYPICAL FLY-BRACING DETAILS



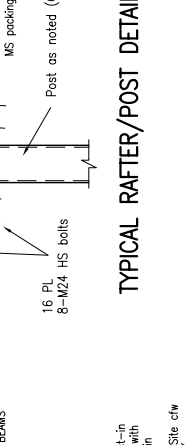
TYPICAL RAFTER/POST DETAILS



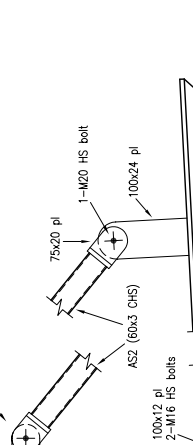
TYPICAL AWNING DETAIL



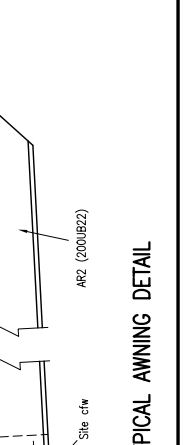
TYPICAL MEZZANINE FLOOR DETAILS



TYPICAL WB CONFIGURATION



TYPICAL WIND BRACING/PANEL CONNECTION DETAIL



END WALL RAKING ANGLE CONNECTION DETAIL

R.P.E.O. 1134
If in doubt ask - DO NOT SCALE!

Copyrights reserved

Proposed New Commercial Building
123-125 Woodlark St. Lismore
for Firestar Developments Pty Ltd

Designed: R.N.
Drawn: R.N.
Checked: [Signature]
Date: 16/6/07
Scale: 1:100 1:10

Ross J. Nicoll & Associates
consulting engineers
civil - structural
566 Vulture St. East, East Brisbane
P.O. Box 7234, East Brisbane (07) 3393 2465

Consultant:
Prestige Properties
Design & Construction
(07) 5529 0073

No. Date Description Revisions

Sheet 2 of 5
Dwg No. 7052-2-1

Roof and Mezzanine Plans and Details

Roof and Mezzanine Plans and Details

Roof and Mezzanine Plans and Details